



**OPTIONAL
INNER PANEL**

Part No.	Material	H		W	
		mm	in	mm	in
PM-1313	Metal	97	3.8	97	3.8
PP-1313	Polyester	97	3.8	97	3.8
PM-1813	Metal	142	5.6	97	3.8
PP-1813	Polyester	142	5.6	97	3.8
PM-1818	Metal	142	5.6	142	5.6
PP-1818	Polyester	142	5.6	142	5.6
PM-2713	Metal	234	9.2	98	3.9
PP-2713	Polyester	234	9.2	98	3.9
PM-2718	Metal	220	8.6	130	5.1
PP-2718	Polyester	220	8.6	130	5.1
PM-2727	Metal	220	8.6	220	8.6
PP-2727	Polyester	220	8.6	220	8.6
PM-3618	Metal	310	12.2	220	8.6
PP-3618	Polyester	310	12.2	220	8.6
PM-3627	Metal	310	12.2	130	5.1
PP-3627	Polyester	310	12.2	130	5.1
PM-3636	Metal	310	12.2	310	12.2
PP-3636	Polyester	310	12.2	310	12.2
PM-5427	Metal	490	19.3	220	8.6
PP-5427	Polyester	490	19.3	220	8.6
PM-5436	Metal	490	19.3	310	12.2
PP-5436	Polyester	490	19.3	310	12.2
PM-5454	Metal	490	19.3	490	19.3
PP-5454	Polyester	490	19.3	490	19.3
PM-7236	Metal	670	26.4	310	12.2
PP-7236	Polyester	670	26.4	310	12.2
PM-7254	Metal	670	26.4	490	19.3
PP-7254	Polyester	670	26.4	490	19.3



INSPECTION COVER

Transparent cover mounted on hinge frame

Part No.	Mounting	H		W	
		mm	in	mm	in
TR-4	*	77	3.3	94	3.7
TR-4A	*	77	3.3	94	3.7
TR-6	*	77	3.3	130	5.1
TR-6A	*	77	3.3	130	5.1
TR-8	*	77	3.3	163	6.4
TR-8A	*	77	3.3	163	6.4
TR-10	*	77	3.3	200	7.9
TR-10A	*	77	3.3	200	7.9
TR-12	*	77	3.3	233	9.2
TR-12A	*	77	3.3	233	9.2
TR-16	**	195	7.7	165	6.5
TR-312	**	240	9.4	240	9.4

* = Mounted on hinged frame

** = Mounted on two hinge pins



**INNER
PANEL RISERS**

Note: Not for 129mm deep enclosures

Part No.	Raises Panel	
	mm	in
P10-M6	10	0.39
P15-M6	15	0.59
P20-M6	20	0.79
P30-M6	30	1.18
P40-M6	40	1.57
P50-M6	50	1.97
P60-M6	60	2.36
P70-M6	70	2.76
P80-M6	80	3.15
P90-M6	90	3.54
P100-M6	100	3.94



**LOCKING SCREWS
TO FIX COVERS**

Replacement Slotted
Head Screws

Part No.	Description
RAL-JBS-1	For 129mm deep enclosures
RAL-JBS-2	Not for 129mm deep enclosures

Manual - Thumb Screw

Part No.	Description
RAL-JBTS	Not for 129mm deep enclosures

4 per pack



**WALL
MOUNTING BRACKETS**

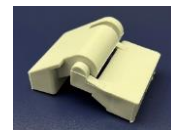
For 129mm deep enclosures

Part No.	Description
RAL-JBWB-1	Plated steel
CB-13-IN	Stainless steel

For all other enclosures not 129mm deep

Part No.	Description
OFC-400	Plastic
RAL-JBAB-2	Plated steel
CB-18-IN	Stainless steel

4 per pack



HINGES

Part No.	Description
BFE	For all enclosures
RAL-JB-HNG	Not for 129mm deep enclosures

2 hinges per pack